



USER MANUAL



DOUGH SHEETER 520 FLOOR MODEL

MODEL: 09377015

READ THIS MANUAL CAREFULLY BEFORE USING



1. PREFACE6
 1.1 Introduction.....6
 1.2 General information.....6
 1.3 Warranty.....6

2. PRODUCT INFORMATION7
 2.1 Intended use.....7
 2.2 Specifications.....7
 2.3 Spare parts7

3. TRANSPORT8
 3.1 Transport & handling8
 3.2 Packaging.....8
 3.3 Before use.....8

4. INITIAL SET-UP8
 4.1 Wiring & connections.....8
 4.2 Placement8

5. OPERATION9
 5.1 How to use the appliance.....9
 5.2 Cleaning.....9

6. MAINTENANCE 10

7. TROUBLESHOOTING 10

8. STORAGE 10

9. DISCARDING 11

APPENDIX: EXPLODED VIEW & SPARE PARTS 12

SAFETY INSTRUCTIONS

- This appliance may only be used for its designed purpose. Neither the manufacturer nor the supplier are liable for damage caused by the incorrect use of this item.
- This is a commercial product that should only be used by those who have read and fully understand this manual. It must not be used by children, or persons with reduced physical, sensory or mental capabilities without supervision.
- This device is intended for indoor use only.
- Keep the appliance and electrical plug away from water and other liquids. If either is exposed to a liquid, immediately disconnect the power supply and have the appliance checked by a certified technician. Not following these instructions may result in electric shock, or even death.
- Do not use the appliance after it has fallen or if is damaged in any way. Have it checked and repaired by a certified technician.
- Do not move the appliance while in operation and never move or carry the appliance by the power cord.
- Do not place or move the appliance on its side, upside-down or while tilted.
- Do not open the casing or try to repair the appliance yourself, unless instructed to by a Maxima technician. This may void the warranty, cause damage to the machine or result in a hazardous situation.
- Do not use any devices or accessories that are not supplied with the appliance or designed to work with it.
- Never put your hands or other body parts near the moving parts of the appliance while operational and always keep an eye on the appliance when in use.
- Do not insert objects in the casing or openings of the appliance.

- Avoid overloading the appliance.
- Keep all packaging away from children and dispose of packaging in accordance with local and national regulations.
- The electrical installation must comply with local regulations.
- Switch off the appliance before removing the power plug.
- Always disconnect the power supply when the appliance is not in use. To remove the plug from the socket, always pull the plug itself and not the cable.
- Do not touch the power plug with damp or wet hands.
- Keep the power cable away from the range of operation and do not cover the cable. Make sure the power cable does not come in contact with hot or sharp objects and keep it away from open flames.
- Note that while the plug is in the electrical socket, the appliance is connected to the electrical grid.

SAFETY SYMBOLS



- Store product between 10-30°C
- Avoid placement in direct sunlight
- Product intended for indoor use
- Double electrical insulation: does not require grounding/earth connections
- Product disposal according to local waste regulations
- Product meets CE requirements

1.1 Introduction

Thank you for purchasing this product from Maxima. To ensure your own safety and to get the best out of your purchase, please read the instructions carefully before attempting to install or use this product. This manual should be available at all times and stored near the appliance.

All Maxima products are CE certified. Our products meet the legal requirements regarding health, safety and the environment, as set out by the European Commission. In addition, all products are thoroughly tested prior to shipment to ensure product quality and safety.

1.2 General information

For after sales support, please visit our Customer Service page at: www.maxima.com/en/service. User manuals are available online and can be downloaded electronically from the product's page on our website. If the manual for your product is not available, please contact Customer Service. For more information, visit our website: www.maxima.com

1.3 Warranty

We offer a 12-month warranty from the date of purchase, as indicated on your purchase invoice. Under the warranty, we will deliver additional spare parts in case of: material defects, manufacturing defects or other quality issues.

The following is not covered by the warranty:

- Damage relating to the incorrect use of the product
- Damage relating to use of parts that were not part of the original machine
- Damage due to transport to another location after delivery, or incorrect installation and connection
- Component damage caused by incorrect electrical or water connection
- Damage as a result of disassembly and/or modification to the original machine without permission
- Damage as a result of misuse, poor cleaning or improper maintenance
- Damage as a result of fire, building collapse, lightning, flooding, power surges or vermin
- Failure to read or follow the user manual
- Consumables and parts prone to wear and tear
- An altered invoice or no invoice

2.1 Intended use

This appliance may only be used for the purpose for which it was designed and intended. The manufacturer and supplier are not liable for any damage caused by incorrect operation and improper use.

This is a commercial product that must only be used by a trained professional who has read and understands this manual. It must not be used by children or persons with reduced capabilities without supervision.

2.2 Specifications

MAXIMA DOUGH SHEETER 520 – FLOOR MODEL						
Article Code	Dimensions (cm)	Weight (kg)	Input	Electrical Power (kW)	Roller Length (cm)	Roller Speed (RPM)
09377015	W205 x D87 x H122,5	195	230V / 50Hz / 1 Phase	0,75	52	133

2.3 Spare parts

An exploded view and list of the spare parts is available in Appendix.

3. TRANSPORT

3.1 Transport & handling

This appliance needs to be lifted by two or more people. Remember to always lift from the legs and not the back. Never try to lift or move objects beyond your capabilities. Ask for assistance or use the appropriate equipment, if necessary.

3.2 Packaging

Unpack and inspect your purchase immediately after receipt. If there are any latent defects or damage to the item, please contact your supplier immediately. Save all packaging materials in case the machine needs to be returned or inspected by the courier.

3.3 Before use

Remove any protective film from any surfaces and clean the appliance and accessories thoroughly before use (see section 6 on "Maintenance").

4. INITIAL SET-UP

4.1 Wiring & connections

If your machine is supplied with a factory fitted molded plug then you may plug the unit into a standard electrical outlet. Make sure that the voltage of the machine and the wall outlet are compatible.

If your machine is not supplied with a factory fitted molded plug then a certified electrician must be contracted to wire the unit to the power supply.

4.2 Placement

The appliance must be positioned on a stable, flat surface. Choose a surface where there is no direct sunlight and is not close to a direct heat source, such as a cooker, oven or radiator.

When positioning the appliance, keep a distance of 10cm (4") between the appliance and walls, or other objects for ventilation and ease of use.

Position the appliance so that the plug is accessible at all times. Always plug the power cord into a compatible, grounded socket.

5. OPERATION

5.1 How to use the appliance

- When using machine, set up the thickness handle to the farthest left position.
- **i** Note: do not put hands in or near the safety guard.
- Placing the dough onto the conveyer belt and putting a sprinkle of flour.
- The upper handle controls the thickness of the dough and the lower handle controls the running and direction of the conveyer belt.
- When dough piece is through the rollers stop the machine and adjust the roller gap smaller, using the directional handle, control the direction for the dough piece to move through the rollers.
- Repeat above steps until the dough piece reaches the desired thickness, occasionally dust the dough piece with flour during the sheeting process.
- Switch off the power when cleaning and disconnect the power mains.

5.2 Cleaning

- Regularly check and clean the appliance, its parts and accessories.
- Always switch off and disconnect the power and gas supply before any cleaning or maintenance.
- Never use aggressive or abrasive cleaning agents. Do not use solvents or petroleum based cleaning agents. Some cleaning agents may leave a harmful residue or cause damage to the machine. Use a mild food-safe cleaning product instead.
- Do not use a scourer or any sharp objects during cleaning as this may cause damage to the machine.
- Never hose down the machine or immerse it in water or any other liquid. Instead wipe the exterior with a damp cloth. Do not use a steamer to clean the machine.
- Never let the power cable or power plug get wet.

6. MAINTENANCE

Check the mains plug and mains cable regularly for damage. Do not continue to use the appliance if it is damaged. Have the unit repaired by a certified electrical technician.

INTERVAL	ACTION	DESCRIPTION
Daily	Cleaning & disinfecting	Thoroughly clean appliance and accessories after every use with a soft cloth and food-safe detergent
Weekly	Surface cleaning	It's recommended to wipe the exterior of the appliance at least once a week
Every 6 months	Check the amount of lubrication grease	Add or replace lubrication grease if necessary

7. TROUBLESHOOTING

PROBLEM	POSSIBLE CAUSE
Cannot start the machine	Electric connectors are loose
	The protection has not action
The protections do not action	Open the cover, check fork of safety switch connecting is loose
	Check the electric circuit of safety switch
The temperature of the machine is too high	Working time too long
	Lack of voltage, check the supply voltage
	Over load, or machine running is wrong
Low in efficiency	Check the motor
	The chain loosens, remove rear the cover, twist the screw, and chain tighten, or replace it
	If you can't trouble shooting as above mentioned, suggest you asking for seller maintenance service

8. STORAGE

Roll the power cable up and store it safely. Make sure the appliance is thoroughly cleaned before storing it away. Store in a cool, dry place.

9. DISCARDING

When disposing of this appliance, please do so in compliance with local and national regulations. It's also important to dispose of any related materials correctly. This piece of equipment may contain packaging and accessories that have to be collected and disposed of separately. These should not be treated as unsorted municipal waste.

Recycling: By disposing of waste in the proper manner, you help avoid hazards in the environment that could be caused by improper treatment of waste.

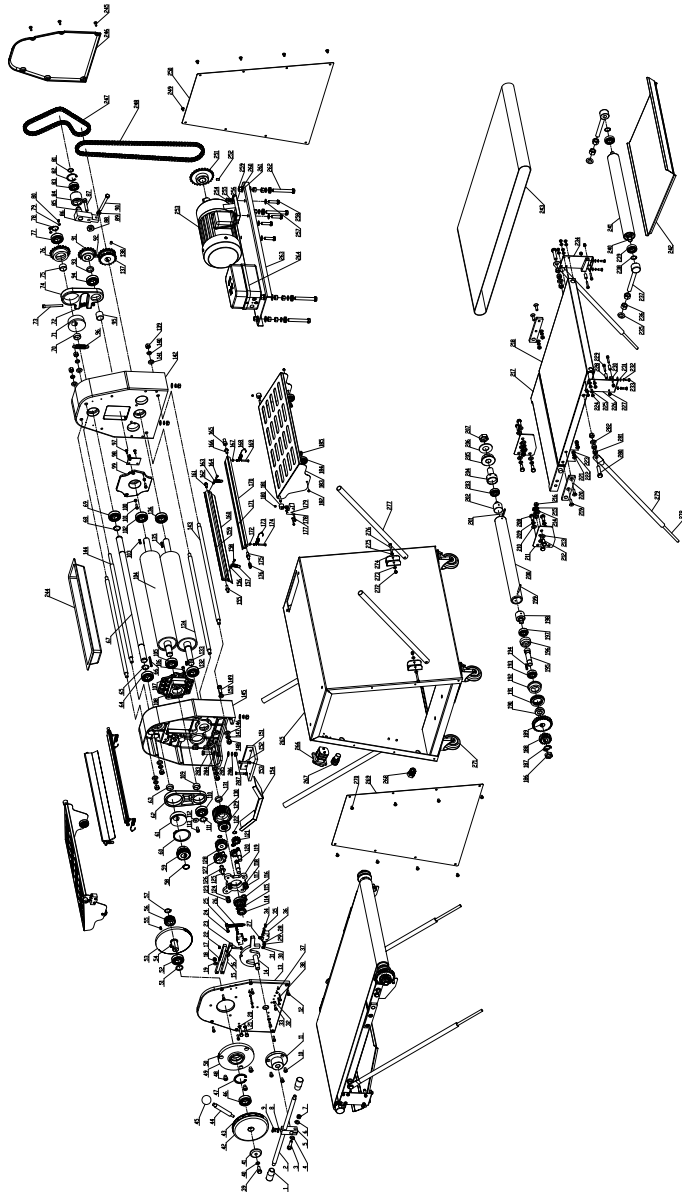
Packaging: The packaging is made from materials to be disposed of through local recycling facilities.

Batteries: If the machine contains a battery, these may contain toxic substances and are a hazard to the environment. Please dispose of used or rechargeable batteries responsibly through a local collection point.

Electronics: If this appliance contains electronic parts, please dispose of electrical waste at a recycling collection point for electronic equipment.

APPENDIX: SPARE PARTS

Exploded view - Model: 09377015



APPENDIX: SPARE PARTS

Spare parts list - Model: 09377015

#	DESCRIPTION	Qty
1	Handle	2
2	Starting lever	1
3	Hexagon head bolts M10x40	1
4	Plain washer 10mm	4
5	Starting rod base	1
6	Plain washer	1
7	Hexagon nut M10	1
8	Hexagon nut M5	2
9	Hexagon head bolts M5x12	2
10	Hexagon socket cap screws M8x12	3
11	Starting lever fixed seat	1
12	Hexagon socket cap screws M6x20	6
13	Right bezel	1
14	Cam weldment	1
15	Positioning bar	1
16	Rack compression spring	1
17	Refracting rack	1
18	Hexagon lock nut M8	2
19	Plain washer 8mm	2
20	Spring washer 8mm	2
21	Hexagon head bolts M8x35	2
22	Hexagon nut M6	1
23	Hexagon head bolts M6x40	1
24	Hexagon nut M6	1
25	Hexagon head bolts M6x25	1
26	Location tension spring	1
27	Hexagon head bolts M6x35	2
28	Hexagon nut M6	2
29	Spring washer 6mm	2
30	Hexagon nut M6	2
31	Spring washer 6mm	2
32	Plain washer 6mm	2
33	Hexagon head bolts M6x20	2
34	Hexagon nut M4	4
35	Plain washer 4mm	4
36	Microswitch	2
37	Plain washer 4mm	4
38	Cross recess pan head screw M4x35	4
39	Hexagon head bolts M10x25	1
40	Spring washer 10mm	1

#	DESCRIPTION	Qty
41	Shaft end ring	1
42	Grid holder	1
43	Thickness setting scale	1
44	Handle	1
45	Handle ball M12	1
46	Bearing 6205	1
47	Circlip for hole	2
48	Hexagon socket cap screws M10x12	3
49	Bearing pedestal	1
50	Pointer	1
51	Bearing ring	1
52	Bearing 6205	1
53	One-way gear weldment	1
54	Flat key A5x14	1
55	Flat key A5x14	1
56	Adjusting the driving gear	1
57	Circlip for shaft 22mm	1
58	Circlip for shaft 25mm	1
59	Adjusting the passive gear	1
60	Circlip for hole 70mm	1
61	Right eccentric	1
62	Right eccentric seat	1
63	Adjust shaft right sleeve	1
64	Bearing	1
65	Circlip for shaft 25mm	1
66	Flat key A5x56	1
67	Adjustment shaft	1
68	Circlip for shaft 25mm	1
69	Bearing 6205	1
70	Adjusting shaft Left short sleeve	1
71	Left eccentric wheel	1
72	Hexagon nut M8	3
73	Hexagon socket cap screws M8x80	1
74	Left eccentric seat	1
75	Adjusting shaft Left long sleeve	1
76	Fixed sprocket	1
77	Bearing 6205	1
78	Circlip for shaft 25mm	1
79	Plain washer 5mm	2
80	Cross recess pan head screw M5x8	2

APPENDIX: SPARE PARTS

Spare parts list - Model: 09377015

#	DESCRIPTION	Qty
81	Circlip for shaft 20mm	1
82	Circlip for hole 42mm	1
83	Bearing 6004	1
84	Tension wheel	1
85	Mandrel	1
86	Adjustment seat	1
87	Hexagon socket cap screws M10x55	1
88	Adjustment seat washer	1
89	Hexagon nut M10	1
90	Hexagon head bolts M10x90	1
91	Activities chain wheel	1
92	Socket head cap screw M8x12	1
93	Adjustable roller left short sleeve	1
94	Bearing 6205	1
95	Adjustable roller left long sleeve	1
96	Tension spring	1
97	Countersunk head screw M6x16	2
98	Tension spring seat	1
99	Slider	1
100	Hexagon nut M6	2
101	Hexagon socket cap screws M6x16	2
102	Bearing 6205	1
103	Flat key A5x25	1
104	Movable roller	1
105	Bearing 6205	1
106	Hexagon socket cap screws M6x16	2
107	Hexagon nut M6	2
108	Slider	1
109	Adjust shaft left short sleeve	1
110	Bearing 6205	1
111	Circlip for shaft 25mm	1
112	Big washer 8mm	1
113	Hexagon socket cap screws M8x16	1
114	Small round nut M24x1,5	1
115	Round nut stop washer 24mm	1
116	Tapered roller bearing 30205	1
117	Hexagon thin nut M14	2
118	Spring washer 14mm	2
119	Planetary holder	1
120	Long planetary shaft	2

#	DESCRIPTION	Qty
121	Asteroid wheel	2
122	Circlip for shaft 13mm	2
123	Hexagon nut M10	2
124	Spring washer 10mm	2
125	Short planetary shaft	2
126	Large planet wheel washer	2
127	Big planet wheel	2
128	Circlip for shaft 13mm	2
129	Thrust ball bearing 51305	1
130	Center gear	1
131	Center wheel inner washer	1
132	Bearing 6205	1
133	Flat key A5x20	1
134	Fixed roller	1
135	Flat key A5x28	1
136	Bearing 6205	1
137	Double chain	1
138	Socket head cap screw M8x12	1
139	Hexagon nut M12	4
140	Spring washer 12mm	4
141	Plain washer 12mm	4
142	Left bracket	1
143	Short fixed link	3
144	Long fixed link	1
145	Right bracket	1
146	Plain washer 12mm	4
147	Spring washer 12mm	4
148	Hexagon nut M12	4
149	Hexagon head bolts M10x35	2
150	Plain washer 10mm	2
151	Oil groove plate	1
152	Hexagon head bolts M6x35	2
153	Hexagon nut M6	2
154	Oil groove	1
155	Fixed roller long scraper shaft	2
156	Hexagon nut M5	2
157	Movable roller scraper tension spring	2
158	Cross recess pan head screw M5x12	2
159	Scraper holder	2
160	Passive roller scraper	2

APPENDIX: SPARE PARTS

Spare parts list - Model: 09377015

#	DESCRIPTION	Qty
161	Short scraper shaft	2
162	Hexagon nut M5	2
163	Movable roller scraper tension spring	2
164	Cross recess pan head screw M5x12	2
165	Hexagon socket cap screws M10x20	2
166	Short scraper shaft	2
167	Hexagon nut M5	4
168	Fixed roller scraper tension spring	2
169	Cross recess pan head screw M5x30	2
170	Scraper holder	2
171	Fixed roller scraper	2
172	Hexagon nut M5	4
173	Fixed roller scraper tension spring	2
174	Cross recess pan head screw M5x30	2
175	Fixed roller long scraper shaft	2
176	Fixed roller scraper pressure spring	2
177	Cross recess pan head screw M4x25	4
178	Plain washer 4mm	4
179	Microswitch	2
180	Socket head cap screw M5x5	4
181	Travel switch press wheel	4
182	Acorn nut M5	4
183	Cover	2
184	Shield support wheel	4
185	Hexagon socket cap screws M6x12	4
186	Hexagon thin nut M20x1,5	2
187	Round nut stop washer 20mm	2
188	Passive small gear	2
189	Passive big gear	2
190	Shaft sleeve	2
191	Thrust ball bearing 51108	2
192	Fixed base	2
193	Bearing 6004	2
194	Flat key A5x32	2
195	Connecting shaft	2
196	Locating sleeve	2
197	Bearing 6203	2
198	Right spindle	2
199	Elastic cylindrical pin 5x45	2
200	Driving roller	2

#	DESCRIPTION	Qty
201	Elastic cylindrical pin 5x45	2
202	Left spindle	2
203	Tapered roller bearing 30203	2
204	Adjust screw	2
205	Adjust nut	2
206	Check ring	2
207	Hexagon thin nut M24x1,5	2
208	Hexagon head bolts M10x25	8
209	Spring washer 10mm	8
210	Plain washer 10mm	8
211	Support plate fixed plate	4
212	Hexagon head bolts M10x25	8
213	Plain washer 10mm	8
214	Plain washer 10mm	8
215	Spring washer 10mm	8
216	Hexagon nut M10	8
217	Fix bracket welds	2
218	Movable bracket welds	2
219	Socket head cap screw M8x30	8
220	Junction plate	4
221	Plain washer 8mm	8
222	Spring washer 8mm	8
223	Hexagon nut M8	8
224	Cross recess pan head screw M6x8	16
225	Plain washer 6mm	16
226	Left bracket	2
227	Hexagon lock nut M6	8
228	Spacer sleeve	8
229	Hexagon socket cap screws M6x30	8
230	Supporting shoe	4
231	Plain washer 6mm	8
232	Spring washer 6mm	8
233	Cross recess pan head screw M6x16	8
234	Right bracket	2
235	Plain washer 16mm	4
236	Hexagon nut M16	8
237	Conveyor belt adjustment base	4
238	Circlip for shaft 20mm	4
239	Bearing 6004	4
240	Conveying passive shaft	2

APPENDIX: SPARE PARTS

Spare parts list - Model: 09377015

#	DESCRIPTION	Qty
241	Conveying passive roll	2
242	Discharging board	2
243	Conveyor	2
244	Flour plate	1
245	Cross recess pan head screw M6x16	6
246	Left cover	1
247	Upper chain	1
248	Lower chain	1
249	Cross recess pan head screw M6x10	8
250	Left and right panel	1
251	Motor sprocket	1
252	Socket head cap screw M8x12	1
253	Motor	1
254	Hexagon nut M10	4
255	Spring washer 10mm	4
256	Plain washer 10mm	4
257	Plain washer 10mm	4
258	Hexagon head bolts M10x40	4
259	Hexagon nut M12	12
260	Spring washer 12mm	4
261	Plain washer 12mm	16
262	Hexagon head bolts M12x90	4
263	Electric box	1
264	Machine body	1
265	Combination switch	1
266	Signal light	1
267	power line lock nut	1
268	Left and right panel M6x10	1
269	Cross recess pan head screw	8
270	Wheel	4
271	Hexagon lock nut M6	4
272	Plain washer 6mm	4
273	Support base	4
274	Plain washer 6mm	4
275	Hexagon head bolts M6x45	4
276	Fixed link welds	4
277	Adjustable lever	4
278	Movable link welds	4
279	Hexagon head bolts M12x50	4
280	Hexagon nut M12	12

#	DESCRIPTION	Qty
281	Plain washer 12mm	4
282	Hexagon head bolts M10x35	4
283	Plain washer 10mm	4
284	Plain washer 10mm	4
285	Spring washer 10mm	4
286	Hexagon nut M10	4

For parts mentioned in the drawing that are not included on this list, please contact Maxima or your supplier.



TECHNICAL DEPARTMENT & WAREHOUSE

NIJVERHEIDSWEG 23A/D - 3641 RP MIJDRECHT - THE NETHERLANDS

☎ +31 (0) 297 253 969

✉ TECHNICAL@MAXIMA.COM