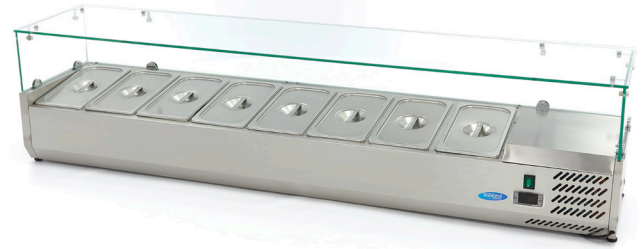




REFRIGERATED DISPLAY

MODEL: STRAIGHT 1800



SPECIFICATIONS

Power	200 Watt
Connection	230V / 50Hz / 1Phase
Nett Weight	55.5 Kg
Gross Weight	84.0 Kg
Machine Dimensions	H435 x W1800 x D395 mm
Packaging Dimensions	H460 x W1880 x D460 mm
Packaging Volume	0.40 CBM
Packaging Material	Wooden Box with Foam
HS Customs Code	84185019
EAN Code	8719324276337
Article Number	09400332

Luxury refrigerated display with glass case
 Stainless steel housing and supports
 Capacity 8 x 1/3 GN
 Fitted with adjustable feet
 Dixell digital temperature controller
 Static cooling
 Foamed evaporator
 Refrigerant R600a / CFC-free
 Temperature 0 ° to + 10 ° Celsius
 Automatic defrost
 Anti Condense System

Excluding: GN containers and lids

- 👑 HIGH QUALITY / LOW PRICES
- 👑 24 / 7 SUPPORT & SERVICE
- 👑 IMMEDIATELY AVAILABLE FROM STOCK
- 👑 TECHNICAL DEPARTMENT & WARRANTY
- 👑 EXCELLENT CUSTOMER SATISFACTION



Stainless steel housing with capacity of 8 x 1/3 GN



Static cooling with foamed evaporator



Dixell digital temperature controller